

Works Completed during the last week.

Week 225: Monday 15th March to Friday 19th March 2010.

- With only a few weeks until contract completion, finishing works continued this week.
- The last in situ concrete pavement slab was cast to the vehicular drop crossing by the pumping station including filling of the recessed manhole covers.
- The Disability Discrimination Act 1995 requires that in order to navigate around their environment, the presence of hazards is highlighted to those with any degree of visual impairment. This is achieved through tactile paving and is provided on this project with stainless steel studs. All studs were drilled and fixed to all pedestrian access step locations.
- The remaining solar powered pavement lights that define the edge of revetment were finished to the required level.

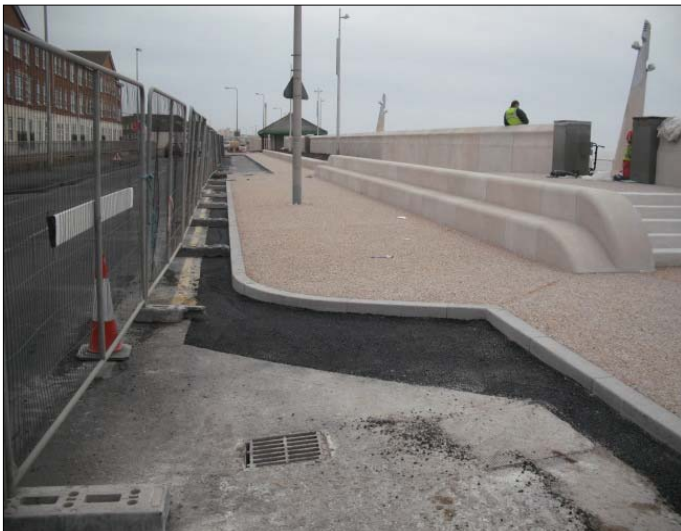


Last pavement slab concrete being placed.



DDA studding in place at the top and bottom of the southern pedestrian access steps.

- Joint sealing to the pavement slab movement joints continued. Each joint requires raking out, drying out, wire brushing, cleared of debris, primed and then finally sealed with sealant.
- Dense bitumen macadam surfacing was reinstated in the highway to all areas that had been excavated to accommodate kerb laying.
- Refurbishment of United Utilities pumping station commenced this week with rendering to the walls being applied and timber being prepared for painting.



Reinstated highway adjacent to footpath kerbing.



Rendering undercoat applied to United Utilities pumping station walls.

Further information about the scheme
can be viewed at
www.wyrecb.gov.uk
www.cleveleys-seawall.co.uk

Birse
Coastal
A Balfour Beatty Company

working in partnership with
Wyre Borough Council
LIVE WYRE LOVE WYRE