

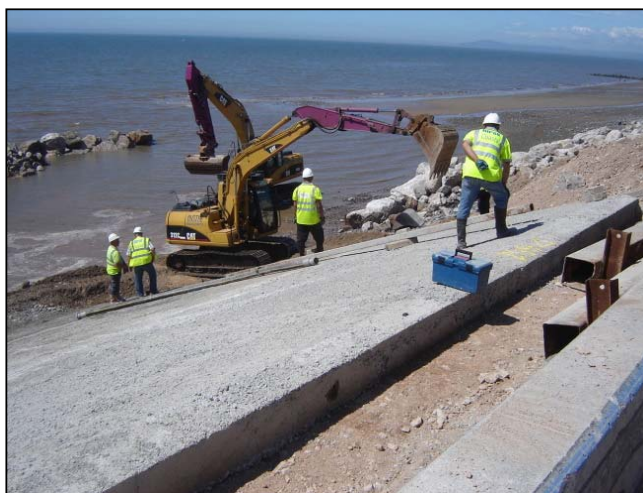
# Works Completed during the last week.

**Week 187: Monday 22 June to Friday 26 June 2009**

- Works continued on the next phase of the revetment preparation works this week. This comprises removing the stone fill and rock armour material protecting the existing aprons, topping up and trimming the profile of the new apron and beach to the correct levels and then covering the new fill with a 150mm blinding layer of concrete onto which the new stepped concrete revetment units will eventually sit.
- Due to spring tides throughout the week progress proved to be very slow; the southernmost section (panel 10) was completed early in the week and work has begun on the preparation of panel 9



Construction of panel 10 being completed.

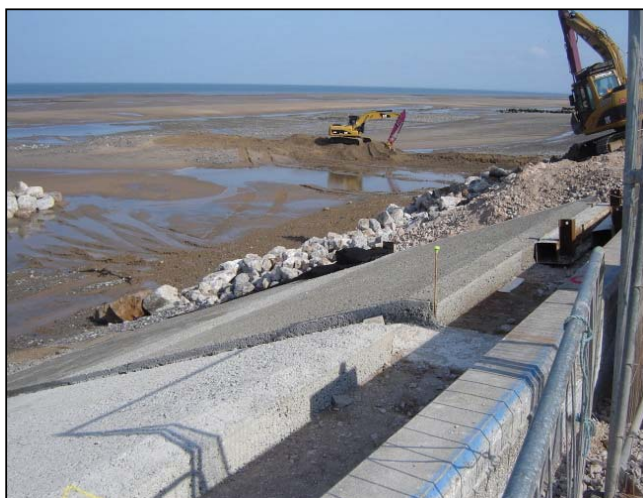


Earthworks to the lower section of panel 9 being carried out.

- Each panel measures 24.5 metres long by 18 metres wide, and each is split into 9 pours, 3 horizontal by 3 up the slope. By the end of the week a third of panel 9 had been unloaded, trimmed to level and concrete placed.
- Other work this week include the completion of jointing and diversion of a United Utilities electric supply.



Bottom pour of panel 9 being prepared.



Southern third of panel 9 completed.

Further information about the scheme  
can be viewed at  
[www.wyrebc.gov.uk](http://www.wyrebc.gov.uk)  
[www.cleveleys-seawall.co.uk](http://www.cleveleys-seawall.co.uk)

**Birse**  
Coastal  
A Balfour Beatty Company

working in partnership with  
**Wyre Borough Council**  
LIVE WYRE LOVE WYRE