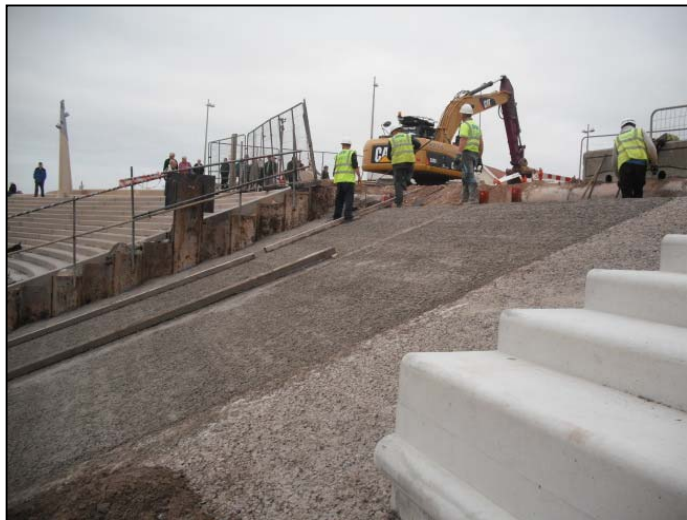


Works Completed during the last week.

Week 205: Monday 26th October to Friday 30th October 2009.

- Work on numerous construction activities continued this week. The revetment fill and blinding foundation was completed this week with the upper half of bay 1 being placed.
- A further 11 full units and 3 half units of pre-cast revetment units along with 3 spine beam units were placed to panel 1 this week but unfortunately the panel could not be complete. The revetment element of the previous phase 3 works were terminated with a line of steel sheet piles and filled in between with concrete. Prior to panel 1 being complete the sheet piles and concrete require trimming to the level of blinding.



Last section of revetment fill and blinding being placed. The piles requiring trimming can be seen in the background



Intermediate walls between upper and lower promenades in place with feature lighting column in the foreground.

- On the promenade, works on the rear sea wall continued with the fixing of steel reinforcement and pouring of concrete to form the rear wall foundation slab to the 20 pre-cast sea wall units placed last week.
- The second storm gate frame was placed in the opening left within the walls and the base reinforcement cage was fabricated.
- Placing of the intermediate walls between the upper and lower promenades continued this week with the lower row of units to wave 6 being complete.
- Placing of the promenade pavement concrete commenced this week at the southern end of the works. This concrete has an exposed aggregate finish and is achieved by applying a chemical to the surface of the concrete which prevents the surface from hardening. Following the initial set of the concrete the surface is washed off revealing the natural golden quartzite aggregate finish
- Installation of pavement recessed manhole covers and frames to the required levels was carried out around the pumping station ready for pavement concrete next week.



Single leaf storm gate frame and reinforcement in place ready for in-site concrete base.



First lower promenade pavement concrete cast with exposed natural golden quartzite aggregate finish.

Further information about the scheme can be viewed at
www.wyrebc.gov.uk
www.cleveleys-seawall.co.uk

Birse
Coastal
A Balfour Beatty Company

working in partnership with
Wyre Borough Council
LIVE WYRE LOVE WYRE