

Works Completed during the last week.

Week 198: Monday 7 September to Friday 11 September 2009.

- Work continued on the rear wall element of the works this week. 7 precast wall units and 2 columns were placed to the rear of the pumping station at the southern end of the works to tie in with the units previously placed.
- Following temporary propping of the units, the reinforcement cage to the base slab of the walls was fabricated, formwork erected around the cage and 115 tonnes of structural concrete poured and compacted to form the base slab.



Precast wall unit being placed to correct line and level.



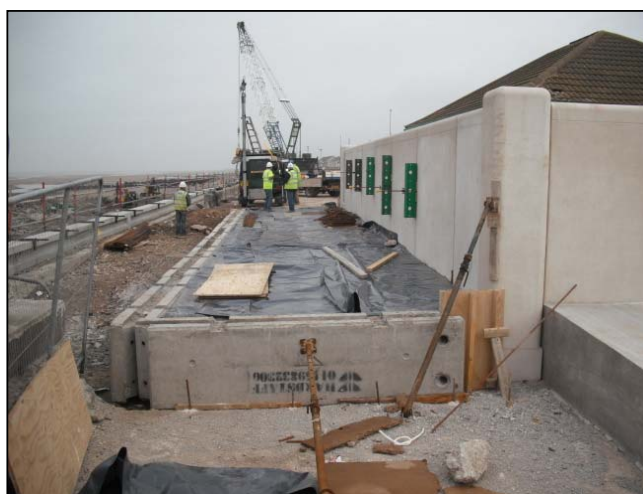
Wall and column units in place and temporarily propped ready for base construction.

Other work this week included placing the bottom row of revetment units to panel 7.

- Backfilling of stone sub base to the rear of the pumping station where wall units have been placed, incorporating the ducting and access chambers for the electric cables to the lighting columns to be installed later in the project.
- Provision of a new temporary site access gate centrally along the works to replace the southern gate.



Reinforcement cage being fabricated to base of wall units.



Wall base completed and covered to cure the concrete.

Further information about the scheme can be viewed at
www.wyrebc.gov.uk
www.cleveleys-seawall.co.uk

Birse
Coastal
A Balfour Beatty Company

working in partnership with
Wyre Borough Council
LIVE WYRE LOVE WYRE