

Works Completed during the last week.

Week 196: Monday 24 August to Friday 28 August 2009

- Work continued on the base to the wall units placed on the Blackpool boundary this week. Following erection of the reinforcement cage last week, formwork was erected around the base to the correct line and level and structural concrete placed within the forms to the required finish level. As this section of base is finished ground level, a brush finish was applied to the surface. After achieving the required concrete strength, the formwork and temporary supports to the wall units were removed.
- The precast concrete column which completes this row of walls at the corner with the Blackpool rear wall was also placed later in the week and its foundation base cast. Due to the conflict of Blackpool's wall, the base was cast on the opposite side of the wall to the main slab.



Wall base ready for concrete.

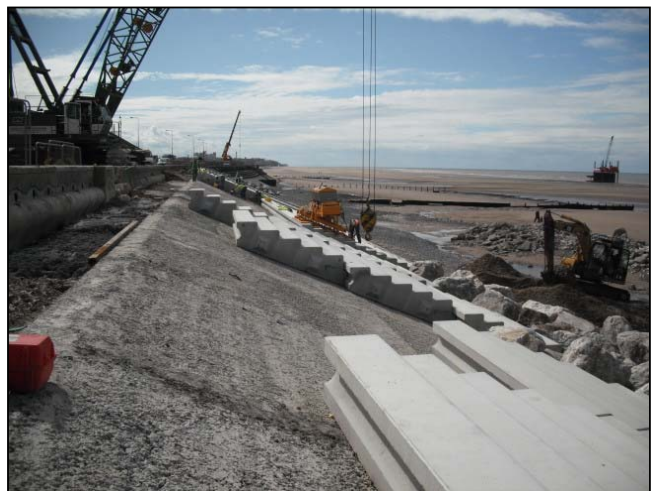


Concrete base completed with brushed surface finish.

- Also this week, neap tides allowed placing of precast revetment units to progress with an additional 25 full and 4 half units being installed to panel 7 along with 4 spine beam units.
- Half of the fill and blinding concrete which forms the foundation to panel 5 was also completed this week.



Bottom middle pour of panel 5 blinding being placed.



Panel 7 revetment units progressing.

Further information about the scheme can be viewed at
www.wyrebc.gov.uk
www.cleveleys-seawall.co.uk

Birse
Coastal
A Balfour Beatty Company

working in partnership with
Wyre Borough Council
LIVE WYRE LOVE WYRE