

Works Completed during the last week.

Week 194: Monday 10 August to Friday 14 August 2009

- Neap tides and reasonable weather allowed good progress to be made on the installation of the pre-cast concrete revetment units this week. All but two of the remaining units to panel 8 along with 4 full units of the bottom row of panel 7 have now been place.
- The placing of stone fill and the concrete blinding to the upper two thirds of the pedestrian steps between panels 6 and 7 has been completed, as has half of panel 6.

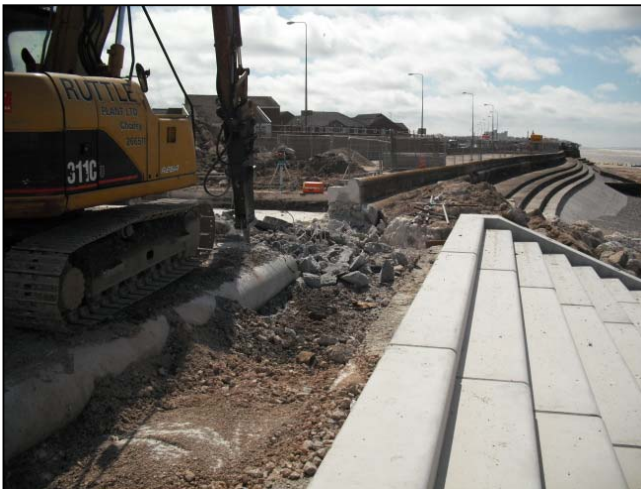


Blinding to upper section of access steps being placed.



View looking south of revetment units placed to date.

- The edge of the new promenade will lie approximately 3 metres seaward of the existing sea wall. The parapet wall of the existing defences currently protrude into what will be the new promenade level and therefore require demolition down to level. Work on this element of work commenced this week around the rear of the pumping station at the southern end of the project.



Demolition of parapet wall.



Parapet wall removed.

Further information about the scheme can be viewed at
www.wyrebc.gov.uk
www.cleveleys-seawall.co.uk

Birse
Coastal
A Balfour Beatty Company

working in partnership with
Wyre Borough Council
LIVE WYRE LOVE WYRE