

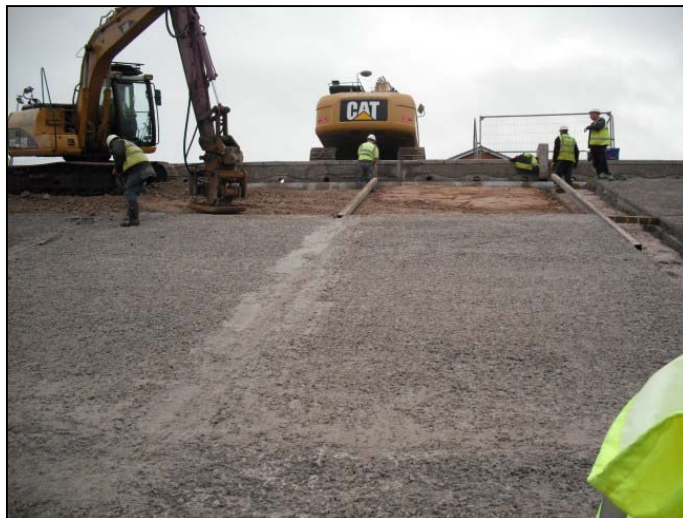
Works Completed during the last week.

Week 193: Monday 3 August to Friday 7 August 2009

- Work continued on the installation of the pre-cast concrete revetment units this week. The remaining units to bay 9 were completed, and 16 full units and 2 half units placed to panel 8. In addition the spine beam units between panels 8 and 9 and the two lower units between panels 7 and 8 have been placed.
- Fill and blinding to panel 7 was completed along with the lower section of blinding to the underside of the set of pedestrian steps that will be placed between panels 6 and 7.

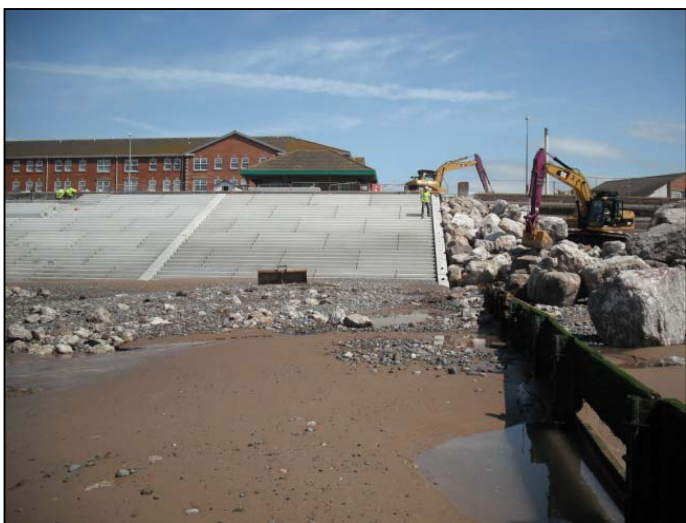


Bottom row of panel 8 adjacent to toe piles being prepared for revetment unit placing



Top section of panel 7 fill and blinding being completed.

- Work has begun on the rear sea wall element of the works around the pumping station at the southern boundary. This activity involves placing precast concrete walls in position and casting an in situ reinforced concrete base which ties into reinforcement of the wall. The 3.5m wide 0.65m deep base slab will not be visible when complete and will sit below the promenade slab.
- The first operation is to excavate the existing promenade to the required level, place a compacted stone base and cover with a concrete blinding topping layer. This provides a solid base from which the wall is constructed. The excavation, stone and blinding concrete to the walls that will be placed at the Wyre, Blackpool boundary was placed this week.
- The rock armour which terminates the works at the Blackpool boundary was completed this week.



Rock armour protection to southern end of works being completed.



Excavation, stone and blinding complete to rear walls at the southern boundary.

Further information about the scheme can be viewed at
www.wyrebc.gov.uk
www.cleveleys-seawall.co.uk

Birse
Coastal
A Balfour Beatty Company

working in partnership with
Wyre Borough Council
LIVE WYRE LOVE WYRE