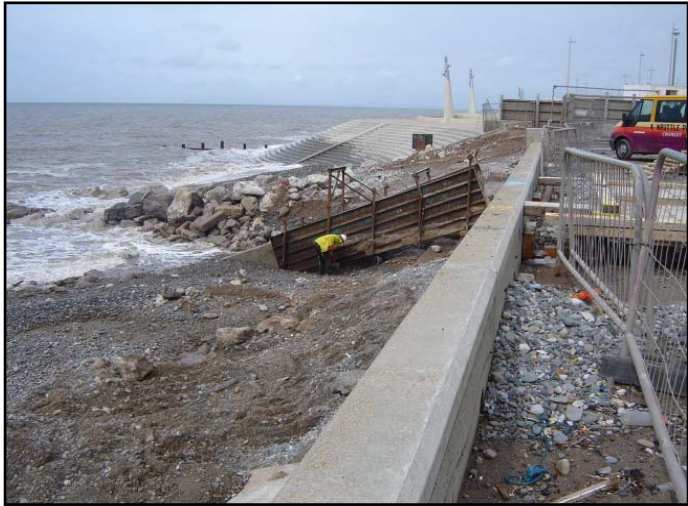


# Works Completed during the last week.

**Week 179: Monday 27 April to Friday 1 May 2009**

- Work continued this week on the placing of diaphragm walls and fill/loading material moving to the northern end of the works. A further two full and three part diaphragm walls were placed (69% complete) along with three full and one part bay of fill material (56% complete).
- Due to the considerably higher beach levels at this end of the works, bays require approximately 300 tonnes of graded imported fill material between two diaphragm walls. Additional material comprising of large pieces of rock and beach material is placed on top of the fill material. This acts both to protect the fill from the tide and provide the additional loading required to force the settlement of the stone column piles placed between the existing structure and toe piles last year. The stone column piles were placed to improve the poor ground located along this length of works.



Top section formwork being placed at the northern most diaphragm wall ready for a concrete pour.



Northern bays being filled with imported fill material.

- Levels have been taken continuously on the monitoring stations placed within the fill material to determine how much the stone column piles have settled. These results will determine how long the piles are ultimately loaded for. At present there hasn't been sufficient time elapsed to determine the extent of the settlement.
- A monitoring station is simply a steel tube welded to a large square steel plate, sitting directly onto the vibro stone column piles, placed within and extending through the fill material. In order to keep the station unaffected by friction of the fill material it is placed within a rigid pipe for the full height of the fill material. A total of 6 stations have been installed within the works completed to date with a further 6 planned for the remaining works. These 12 stations will give the design team a detailed account of how the ground stabilisation piles are settling and accurately inform the team when the placing of the revetment units can commence.



Installation of a monitoring station.



Two lower sections of diaphragm wall being prepared for a concrete pour.

Further information about the scheme can be viewed at  
[www.wyrebc.gov.uk](http://www.wyrebc.gov.uk)  
[www.cleveleys-seawall.co.uk](http://www.cleveleys-seawall.co.uk)

**Birse**  
Coastal  
A Balfour Beatty Company

working in partnership with  
**Wyre Borough Council**  
LIVE WYRE LOVE WYRE