

Works Completed during the last week.

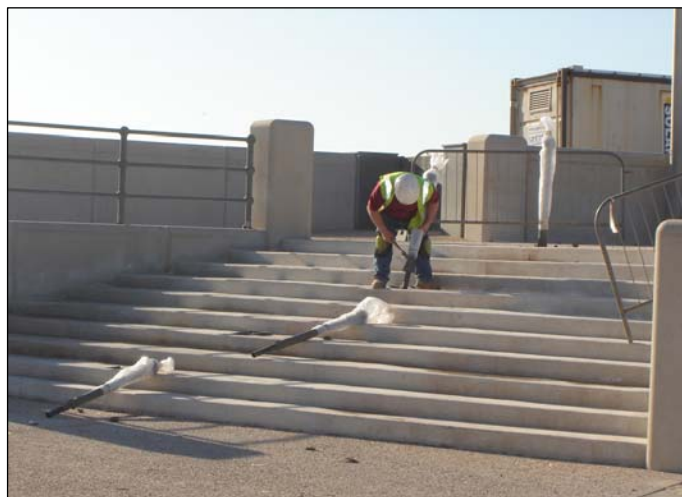
Week 116: Monday 11 February to Friday 15 February 2008

- The Phase 3 promenade works are nearing completion. Works within the plaza area this week have been concentrated on the handrailing systems which are required to be in place before the promenade is opened to the public.
- The lights to the roof of shelter 3 were installed this week. However, due to the continued vandalism to the uprighters within the Phase 2 shelters, floor lights will not be installed.

The promenade is not yet finished and remains closed to the public until further notice. Wyre Borough Council and our partner Birse Coastal politely request that all members of the public Keep Out of the site for their own safety.



The promenade has been inundated with visitors due to good weather and the half term holidays.



Handrailing is installed within the plaza area

- Works to the slade extension have continued with the concreting of another concrete slab. Unfortunately the tidal conditions have not been suitable for further pours this week.
- Works adjacent to the cafe have seen the positioning of a precast concrete column and the continued construction of the tie in wall including the casting of the base and the installation of the reinforcement cage. Other work has seen the installation of pumps and a water treatment system within the cafe building for the water play feature.



A pre-cast column is positioned at the cafe.



The tie-in wall reinforcement is fabricated.

Further information about the scheme can be viewed at
www.wyrebc.gov.uk
www.cleveleys-seawall.co.uk

Birse Coastal
A Balfour Beatty Company

working in partnership with
Wyre Borough Council
LIVE WYRE LOVE WYRE