

Works Completed during the last week.

Week 115: Monday 04 February to Friday 08 February 2008

- The beaching of the 6,000-ton Sea Trucks vessel 'Riverdance' off Cleveleys beach gained much national TV and press coverage and provided Cleveleys with a new tourist attraction, drawing crowds from all around the country.
- It also provided a problem for officers from Wyre Borough Council and Birse Coastal as cargo from the stricken vessel strayed onto the beach in front of the new works. Working with the Maritime and Coastguard Agency plans have been drawn up to clear the debris from the beach and to deal with a potential oil spillage should the vessel break up.

Coastguards are advising members of the public who plan to visit the site to view it from a safe distance on the promenade and not to venture down onto the beach.



The listing Riverdance lies just to the south of the Cleveleys site



Just some of the debris from Riverdance which has been washed up within the site boundaries

- Works on the promenade have continued despite the disruption caused by the Riverdance incident. This week has seen concrete placed to the water play feature outside the café building to the north of the site. The structure will be further enhanced by the addition of a blue resin bound glass as used to form the waves in the Phase 2 intermediate walls.
- Other works adjacent to the café have seen the coping stones added to the ramp access wall. The coping stones have been pre-cast off site and match the seawall in colour. The wall will be rendered in white to match the cafe building.



Templates for the blue resin enhancements are placed within the water play feature concrete pour



Pre-cast capping stones are placed by hand

- Works to the slade extension have continued this week with the concreting of the lower access ramp. The concrete is the same mix used on the stepped revetments which contains a granite aggregate in order to provide greater resistance to abrasion from the shingle beach. These works are within the tidal zone and are planned with great care to ensure that all works are completed within the available tidal window.
- Further works on the beach have been undertaken to the groyne boards with the provision of additional bracing and bolts at the revetment edge.

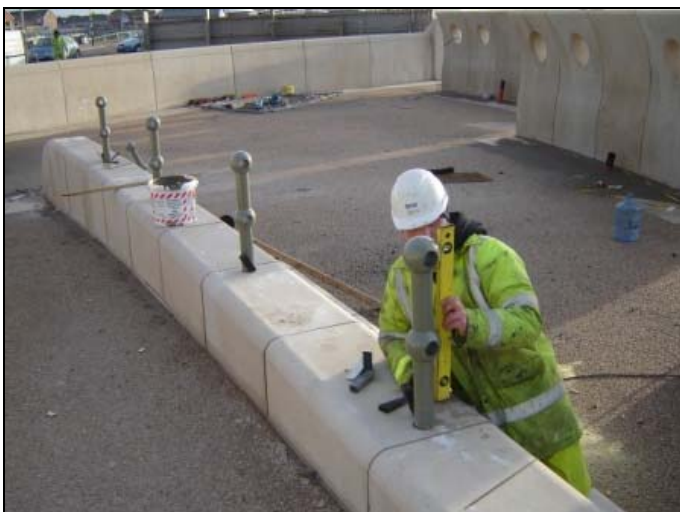


Toproc concrete is placed on the slade extension.



Additional bolts are fixed through the groyne boards

- Contractors have been on site installing handrails at both the café area and the southern plaza area adjacent to the Victoria Road West roundabout. The handrails to the northern beach access steps are programmed to be installed next week.
- The line of the tie in seawall to the north of the café building has been excavated and blinding concrete placed. The steel reinforcement for the wall base has been fabricated ready for concreting next week. This section of wall is being cast insitu and will have a similar sloping profile to the tie-in wall cast at the southern end of the scheme last week. The curving wall will be the last section of seawall to be placed along the entire length of the scheme.



Handrail posts are checked for line and level before they are fixed into place



Steel reinforcement cages are fabricated for the tie in wall bases

Further information about the scheme can be viewed at
www.wyrebc.gov.uk
www.cleveleys-seawall.co.uk

Birse
Coastal
 A Balfour Beatty Company

working in partnership with
Wyre Borough Council
 LIVE WYRE LOVE WYRE